

JANUARY 2025

iowa

ELECTRIC COOPERATIVE LIVING

**Balancing electric
supply and demand**

**Resolve not to fall victim
to scams**

Recipes: Bread winners

Students: Apply for the 2025 Youth Tour and scholarships ▶ See Page 5

CONTENTS



6



8



10

VOLUME 78 • ISSUE 1

3

STATEWIDE PERSPECTIVE

Board president reflects on statewide service

3

EDITOR'S CHOICE CONTEST

Win a stainless steel bread machine

14

ENERGY MATTERS

Understanding battery storage options

15

OUT BACK

Finding beauty in the broken

EDITOR
Ann Foster Thelen

DESIGNERS
Megan Walters
Bree Glenn

IAEC DIRECTOR OF COMMUNICATIONS
Erin Campbell

IAEC EXECUTIVE VICE PRESIDENT
Leslie Kaufman

IAEC BOARD OF DIRECTORS
Jim Miller, District 5 – President
Gordon Greimann, District 6 – Vice President
Tony Lem, District 2 – Secretary/Treasurer
Jerry Keleher, District 3 – Asst. Secretary/Treasurer
Travis Harris, District 1
Steve Inskeep, District 4
Bruce Amundson, District 7
Marion Denger, Prairie Energy Cooperative – NRECA Representative
Terry Sullivan, Linn County REC – Managers' Representative

Iowa Electric Cooperative Living magazine (ISSN: 2770-8683) is published monthly by the Iowa Association of Electric Cooperatives, a not-for-profit organization representing Iowa's member-owned local electric cooperatives. Association address: 8525 Douglas Ave., Suite 48, Des Moines, IA 50322-2992. The phrase ***Iowa Electric Cooperative Living*** is a mark registered within the state of Iowa to the Iowa Association of Electric Cooperatives. The magazine does not accept advertising.

Editorial Office
8525 Douglas Ave., Suite 48, Des Moines, IA 50322-2992. Telephone: 515-276-5350.

Email Address
editor@ieclmagazine.com. *Iowa Electric Cooperative Living* magazine does not assume responsibility for unsolicited items.

Website
www.ieclmagazine.com

Postmaster
Send address changes to *Iowa Electric Cooperative Living* magazine, 8525 Douglas Ave., Suite 48, Des Moines, IA 50322-2992. Periodicals Postage Paid at Des Moines, Iowa, and at additional mailing offices.

Change of Address
Every local electric cooperative maintains an independent mailing list of its members, so please send your change of address directly to your local electric cooperative's office. *Iowa Electric Cooperative Living* magazine cannot make an address change for you.

© Copyright 2025, Iowa Association of Electric Cooperatives. No portion of the editorial, photographic or other content of *Iowa Electric Cooperative Living* magazine or its website may be reproduced without written permission of the editor.



ON THE COVER

Special thanks to Cindi Miller, a Guthrie County REC member-consumer, for supplying this month's cover image. Submit high-resolution photos for consideration to editor@ieclmagazine.com. You could receive \$100!

A GRATEFUL FAREWELL: REFLECTING ON MY STATEWIDE SERVICE

BY KENNY VANDENBERG



Last month, the Iowa Association of Electric Cooperatives (IAEC) held its 2024 Annual Meeting in West Des Moines, with the theme of “Powering Lives, Empowering Communities.”

With a statewide leadership transition in 2024, it was a year of new beginnings at IAEC. But amidst change, we remain steadfast in our cooperative mission to help Iowa’s electric cooperatives power lives and empower communities every day.

The annual meeting was a bittersweet time for me as it signaled the end of my six-year tenure on the IAEC board, where I most recently served as board president. It has been an honor to represent the electric cooperatives of District 1 on the statewide board, and I found myself reflecting on the many things that our statewide trade association has accomplished in the past six years, including:

- Sending two crews of volunteer linemen to rural Guatemala (in 2019 and 2024) to bring the advantages of electricity to underserved areas.
- Maintaining a credible reputation while defending local co-op governance with legislators and regulators.
- Welcoming Leslie Kaufman as IAEC’s new executive vice president and general manager in July 2024.

None of these accomplishments would have happened without the foresight of the IAEC board along with support from Iowa’s electric co-ops and the statewide staff.

The power in stepping outside of one’s comfort zone

I want to thank the current board members as well as past board members who have helped me along the way over the past six years. There are not enough words to thank the IAEC staff for their help, knowledge and willingness to go above and beyond.

Serving on the IAEC board was the furthest thing from my mind all those years ago, but a few individuals challenged me to step out of my comfort zone and expand my knowledge of the electric industry. If it weren’t for their encouragement, I wouldn’t be here looking back on what was accomplished. I owe these folks a huge thank you for believing in me and giving me a little push.

So, as I pass the baton to new statewide directors at the start of a new year, I challenge each of you to step out of your comfort zone, try new things and get involved in your community. You will be amazed at what you will learn and the lifelong friendships that will develop.

I wish you and your family a blessed year!

Kenny Vandenberg is the outgoing board president for the Iowa Association of Electric Cooperatives and currently serves as board president of Chariton Valley Electric Cooperative.

- Keeping safety as our top priority, with fiscal responsibility also a priority.
- Seeing great participation in IAEC’s educational and safety training opportunities for co-op staff and directors.
- Witnessing cooperation among cooperatives and restoring power in the wake of two derechos.
- Meeting the COVID pandemic challenges head on and creating more ways to connect with Iowa’s electric cooperatives virtually and digitally.
- Launching our first statewide Shine the Light contest in 2021 to celebrate our cooperative commitment to community.
- Introducing our Cooperative Leadership in Iowa Program in 2023 to equip emerging leaders at Iowa’s electric cooperatives.

EDITOR’S CHOICE CONTEST

WIN A STAINLESS STEEL BREAD MACHINE!

The KBS stainless steel smart bread machine has 17 settings for making bread, jam, yogurt, cake, pizza dough and more! Plus, it features an automatic fruit and nut dispenser. It bakes up to a 2-pound loaf, with three crust settings in light, medium and dark. An ultra-quiet 710-watt motor makes kneading quick and even, strong and durable, so the dough is soft and elastic. A unique ceramic bread pan uses safe nanotechnology to achieve a nonstick effect.



ENTER ONLINE BY JAN. 31!

Visit our website and win!

Enter this month’s contest by visiting www.ieclmagazine.com no later than Jan. 31. You must be a member of one of Iowa’s electric cooperatives to win. There’s no obligation associated with entering, we don’t share entrant information with anyone and multiple entries from the same account will be disqualified.

The winner of the iRobot Roomba from the November issue was **Edward Mosbach**, a **Prairie Energy Cooperative** member-consumer.

BALANCING ELECTRICITY SUPPLY AND DEMAND

BY COZY NELSEN



Electricity is essential for nearly every aspect of daily life – so essential that we rarely think about how it's produced and delivered to

our homes. You might be surprised to learn that behind the scenes, a network of experts is working daily (and even by the minute) to anticipate how much electricity you need before you even use it.

We're all connected to the electric grid, so ensuring the right amount of electricity for all involves a complex process of forecasting energy demand, planning for capacity and securing enough supply to meet Americans' needs.

Powerful sources

First, electricity must be generated at a power plant using either traditional sources, such as coal, natural gas or nuclear energy, or from renewable sources, such as solar, wind or hydropower.

Guthrie County REC works closely with our power supplier, Central Iowa

Power Cooperative (CIPCO), to secure enough electricity for our communities, using a diverse mix of energy sources to generate the power we deliver to your home or business. By maintaining a diverse energy mix including coal, wind and solar, Guthrie County REC has options to ensure reliable power at a competitive cost.

Electricity supply changes throughout the day because demand fluctuates based on consumers' needs. For example, Guthrie County REC knows we need more electricity in the mornings when you're starting your day, and in the evenings when you're cooking dinner, running appliances and electronics. Demand also increases when weather patterns change, such as extremely warm or cold temperatures.

In our case, the amount of electricity generated and how much is sent to specific areas are coordinated and monitored by a regional transmission organization (RTO) and independent system operator (ISO). RTOs, ISOs and electric utilities act as air traffic controllers for the electric grid. They forecast when you, your neighbors and

communities across a large region will need more power. These organizations take measured steps to ensure there's enough supply to meet demand.

Looking ahead

As the energy sector undergoes rapid change, it's important for all consumers to understand the basics of electricity supply and demand.

Electricity use in the U.S. is expected to rise to record highs this year and next, with the demand for electricity expected to at least double by 2050. At the same time, energy policies are pushing the early retirement of always-available generation sources, which will undoubtedly compromise reliable electricity.

Managing the balancing act of electricity supply and demand is a complex job, which is why we have a network of utilities, power plant operators and energy traffic managers in place to direct the electricity we need and keep the electric grid balanced.

Cozy Nelsen is the CEO of Guthrie County REC.



Guthrie County REC

A Touchstone Energy® Cooperative



Office
1406 State Street • P.O. Box 7
Guthrie Center, IA 50115-0007

Office Hours
Monday through Friday, 8 a.m. - 4:30 p.m.

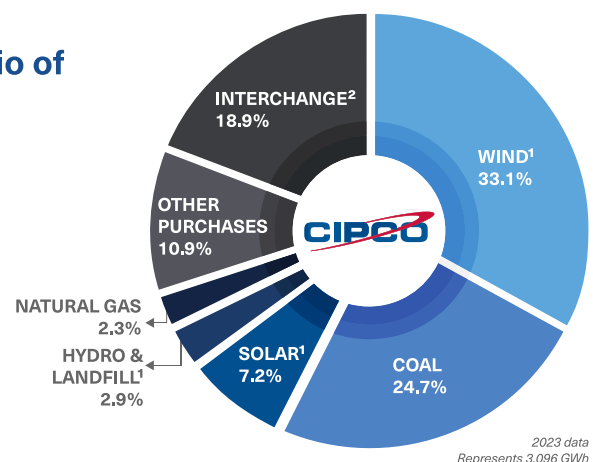
Telephone Number
641-747-2206 or 888-747-2206
Calls answered 24 hours a day, 7 days a week

Website
www.guthrie-rec.coop

This institution is an equal opportunity provider.

A Balanced Portfolio of Energy Sources

As a 24/7 energy provider, Central Iowa Power Cooperative is able to meet Guthrie County REC's needs with a diverse fuel mix of coal, hydroelectric, wind, solar, landfill gas, natural gas and oil energy resources.



¹CIPCO invests in the development of renewable energy projects in several ways. We operate six small-scale solar arrays near communities we serve and retain the renewable energy certificates associated with each. We also contract with energy producers for the electricity output from wind, solar, hydro and methane gas from a landfill (converted into electricity). CIPCO cannot claim these resources as renewable within our supply portfolio as we have either sold to third parties or do not receive the renewable attributes associated with the electricity produced from these renewable power sources. By selling these attributes (RECs), we not only support other organizations in meeting their renewable energy goals, we also generate revenue to help us lower our wholesale power rate to our 12 member-owner distribution cooperatives and 15 municipalities.

²A percentage of market purchases exist within the portfolio to meet additional supply needs not covered by existing contracts or CIPCO-produced generation. Weather volatility and unplanned operational events at power plants may also impact market purchases.

APPLY TODAY FOR THE 2025 YOUTH TOUR!



The deadline for applications is Saturday, Feb. 1.

One way Guthrie County REC invests in the next generation of rural Iowa leaders is by participating in the national electric cooperative Youth Tour program. As part of this, we're looking for high school sophomores or juniors with a passion for government and public service to apply for a once-in-a-lifetime free trip to our nation's capital.

The deadline for applications is Saturday, Feb. 1. More information and the application are posted at www.guthrie-rec.coop/youth-tour. Please note the following guidelines when submitting your application:

- 1 Applications are welcome from all high school sophomores or juniors within the Guthrie County REC service territory, both REC members and non-members. This includes the following school districts: AC/GC, ADM, Audubon, CAM, CR-B, DC-G, Exira-EHK, Panorama, Perry, WCV and Woodward-Granger.
- 2 Three semifinalists will be selected for an in-person interview at the Guthrie County REC office.
- 3 The winner will be required to attend two Guthrie County REC board meetings: one in April or May

prior to the trip, and one following the trip. The winner must also complete a job shadow with Guthrie County REC personnel in April or May and give a presentation of their trip experience at the Guthrie County REC Annual Meeting in January 2026.

- 4 The trip will take place June 15-21.
- 5 Successful candidates will demonstrate the following traits: good leader, respectful of others, represents the REC well, good communication skills, knowledgeable of the REC and government officials, community involvement (character), dependable and a team player.

Iowa's locally owned electric cooperatives have been sending high school students to Washington, D.C., every June since 1958. On the week-long tour, students learn about electric cooperatives, American history and U.S. government and walk away with a greater understanding of their role as an American citizen. They participate in National Youth Day, visit with their elected legislators and explore the sights around the nation's capital. High school sophomores or juniors with a passion for government and public service are encouraged to apply.



Lucas Obert, a student at Coon Rapids-Bayard, represented Guthrie County REC during the 2024 Youth Tour, and was elected to the National Rural Electric Cooperative Association Youth Leadership Council.

Approximately 40 high school students are chosen by local electric cooperatives from across the state of Iowa every year. The Iowa students join with more than 1,800 students from co-ops around the country for the national Youth Tour in Washington, D.C., in June.

Students are selected for this program through the overall strength of the applicant. If you want to take advantage of this incredible leadership opportunity, please complete the online application and return to Guthrie County REC by Feb. 1.

SCHOLARSHIP APPLICATIONS DUE APRIL 4

If you are, or know of, a student who could use some extra money for college, encourage them to apply for the Guthrie County REC 2025 scholarship today!

High school seniors in the Guthrie County REC service territory who are interested in continuing their education in any field of study or powerline programs are invited to apply for the 2025 scholarship. Guthrie County REC will award three \$1,000 scholarships to individuals enrolled

full-time at an accredited college, university or vocational/technical school, or attending power lineman school for the 2025-2026 school year. Applicants must have a parent or guardian who is a member of Guthrie County REC.

Applications must be postmarked on or before Friday, April 4. The application must include the application form; a personal letter stating your educational goals, financial need and work experience; a statement on why you

think rural electric cooperatives are important; a wallet-sized photo of the applicant; and your most recent academic transcript. Due to the volume of applications, only students awarded a scholarship will be notified.



Visit www.guthrie-rec.coop/scholarships for more information and to download the application.



THE EVER-CHANGING, FAST-GROWING DEMAND FOR ELECTRICITY

BY SCOTT FLOOD

When rural electric cooperatives first strung power lines from farm to farm less than a century ago, most members had but a handful of light bulbs to power. With time, they added appliances like refrigerators, but we're sure they couldn't begin to imagine the number and variety of electrical devices in today's homes and garages.

Across the U.S., people use a growing amount of electricity at work, home, and with the growth of electric vehicles (EVs), even on the road.

The demand for electricity increased by 2.5% in 2024 and is expected to grow by 3.2% this year. That was after co-ops saw a 4.8% increase in

2022. Through 2029, the nation's peak demand is projected to grow by 38 gigawatts. That would be like adding another California-sized state to our nation's power grid.

Factors driving demand

The rapid growth of artificial intelligence (AI) is driving the development of massive data center facilities, often placed in electric co-op service territories to take advantage of inexpensive land and fewer neighbors to complain. By 2022, these facilities accounted for 2.5% of the nation's consumption of electricity – and by 2030, they'll use 7.5% of all electric power.

Data centers and facilities like warehouses require a large, steady supply of electricity 24 hours a day. That means the electric co-ops supplying them can't rely on intermittent sources of electricity, such as solar or wind energy, to handle the additional load. Instead, they need more of what's known as baseload or always-available power, much of which is currently generated by burning fossil fuels. The more we depend on technology, the more we'll need reliable baseload generation.

Baseload power is essential

Yet that's a problem because at the same time Americans are using more

electricity, power providers are being forced to shut down reliable sources of baseload power such as coal and nuclear power plants. Many large coal plants have been converted to use cleaner-burning natural gas, but others have been deemed too costly to convert and are prematurely being shut down. More than 110 gigawatts of always-available generation – enough to power about 35 million homes – is forecast to retire by 2033.

The U.S. Energy Information Administration’s forecast expects coal-fired generation to drop to half of today’s levels by 2030. Renewable energy will capture a growing share of the supply, but as noted, much renewable energy is not reliable enough to provide baseload power.

Demand will steadily increase
As electricity powers a growing share of life’s tools and conveniences, overall demand is expected to continue its steady growth through 2050. A great example is the efficiency of electric heat pumps. Federal and other subsidies and tax advantages are powering significant growth in their share of the home heating market.

In other words, at the same time everyone is using more electricity than ever, the supply of the most reliable source is drying up. Add in the uncertainty created by public policy debates around energy and climate change, and you can begin to understand why 19 states face a high risk of rolling blackouts between now and 2028.

The energy industry studies demand closely because construction of all types of generation is costly and lengthy – often taking more than a decade from groundbreaking to entering service.

As renewables become more efficient and cheaper to produce, their share of the power mix will only continue to grow. Someday soon, battery technology may reach the point where large-scale storage of renewable generation becomes possible, but until then, we’ll need more of those always-available power sources.

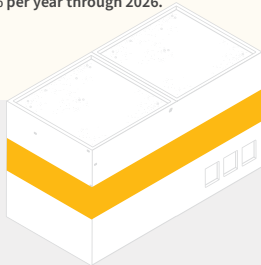
Scott Flood writes on a variety of energy-related topics for the National Rural Electric Cooperative Association.

Soaring Demand

After decades of flat or declining electricity demand, the U.S. is in the midst of a boom in power use. Recent government data shows that power consumption nationwide is set to increase by at least 38 gigawatts (GW) between now and 2028. This trend would ordinarily be great news for the power industry. But government policies aimed at shutting down fossil-fuel-based generation and years-long delays in permitting and siting for new transmission lines are turning this power boom into a capacity crisis. Here are the primary demand drivers:

Electrification

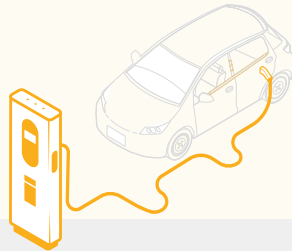
Electric vehicle adoption, electrification of home heating and industrial electrification are expected to increase overall U.S. energy consumption by 1% per year through 2026.



65%

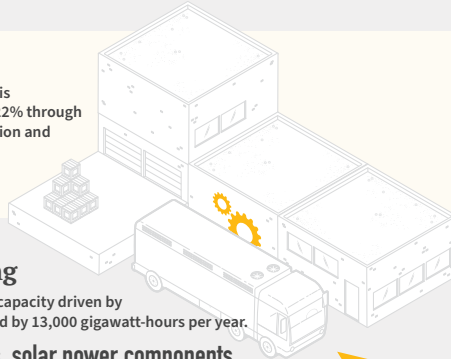
Data Centers

Driven by explosions in artificial intelligence, cryptocurrency and cloud computing, total U.S. data center load is projected to increase by 65% by 2050.



Economic Growth

Residential power consumption is expected to increase by 14% to 22% through 2050 due to increases in population and steady economic growth.



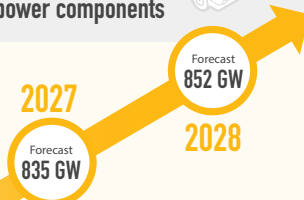
Manufacturing Growth/Onshoring

New, expanding and “onshored/reshored” manufacturing capacity driven by federal incentives is expected to increase industrial demand by 13,000 gigawatt-hours per year.

Key products: EVs, batteries, semiconductors, solar power components

Total Demand

Analysts predicted in 2023 that U.S. peak demand will increase by at least 38 GW over the next five years, nearly double the growth rate predicted in 2022.



BREAD WINNERS



ORANGE BREAD

- 1 tablespoon orange zest
- juice from 1 orange
- water
- 2 tablespoons shortening
- 1 cup sugar
- 1 teaspoon vanilla
- 1 egg
- 2 cups flour
- ¼ teaspoon salt
- 1 teaspoon baking powder
- ½ teaspoon baking soda
- 1 cup raisins
- ½ cup chopped walnuts, optional

Scrape orange rind to make zest, and squeeze juice from orange adding enough water to make 1 cup of liquid. Cream shortening, sugar, vanilla and egg. Add juice and remaining ingredients. Mix thoroughly. Bake in greased and floured loaf pan at 350 degrees F for 1 hour. *Yields 12 slices*

Carol Reeves • Sheldon
North West Rural Electric Cooperative

QUICK CARAMEL ROLLS

- 2 8-ounce cans refrigerated crescent rolls
- ½ cup butter
- 1 cup brown sugar
- 2 tablespoons water

Leaving crescent rolls in a roll, cut each can into 12 pieces. Place four across and six down in a greased 9x13-inch pan. Mix butter, brown sugar and water. Cook in microwave until it reaches a boil, stirring every minute – do not overcook! Pour mixture over crescent rolls. Bake at 350 degrees F for 15-20 minutes or until golden brown and the edges are bubbly. Invert onto a serving platter.

Steph Messner • Rock Rapids
Lyon Rural Electric Cooperative

QUICK YEAST BREAD

- 1¼ cups warm milk
- ½ cup butter, melted
- 1 egg
- 2 tablespoons sugar
- 2 tablespoons honey
- 4 cups flour
- ¼ teaspoon salt
- 1 tablespoon quick yeast

Mix milk, butter, egg, sugar and honey. In a separate bowl, mix flour, salt and yeast. Mix dry ingredients together with liquid ingredients. Knead and then place in a warm place until doubled in size. Knead again for 5 minutes. Divide into two and place in greased small loaf pans to rise for 1 hour. Bake at 350 degrees F for 30 minutes, until brown. *Serves 4-6*

Alice Draper • Eldora
Grundy County Rural Electric Cooperative

PISTACHIO BREAD

- 1 yellow cake mix
- 1 3-ounce box instant pistachio pudding
- 1 cup sour cream
- ¼ cup oil
- ¼ cup water
- 4 eggs, beaten
- ¼ cup sugar
- ½ cup nuts
- 1 teaspoon cinnamon

Mix cake mix, pudding, sour cream, oil, water and eggs until smooth. Pour half of batter into two greased bread pans. Mix sugar, nuts and cinnamon. Pour mixture on top of batter. Cover with remaining batter. Bake at 350 degrees F for 45 minutes.

Kim Swanson • Lockridge
Access Energy Cooperative

CHALLAH

- 1 cup warm water
- 2¼ teaspoons active dry yeast
- 1 teaspoon granulated white sugar
- 2 large eggs
- ½ cup honey
- 6 tablespoons grapeseed oil
- 4½ cups all-purpose flour
- ½ teaspoon salt
- 2 large egg yolks
- 1 teaspoon water

In a large bowl, whisk together the warm water, yeast and granulated sugar. Set aside for 5-10 minutes, or until foamy. Add the eggs, honey and oil. Whisk well. Add mixture to a stand mixer fitted with a dough hook. Add the flour ½ cup at a time and the salt while mixing on a medium-high speed. Mix for 5-7 minutes, or until a very smooth dough forms. If using a hand mixer fitted with a dough hook, combine the ingredients until a shaggy dough forms, about 2 minutes on medium-low speed, then remove from mixing bowl and knead by hand for about 10 minutes. Grease another large bowl with oil. Place the dough inside the bowl, cover with plastic wrap. Proof for about 1 hour. Lightly flour a clean surface and rolling pin. Place the dough on the surface and punch it down four times with your hands. Cut the dough into six equal dough balls. Using a rolling pin, roll out six long pieces, then roll them into strands with your hands. Use three strands to make each braided loaf. Place the loaves on a baking sheet lined with parchment paper, cover with plastic wrap and proof for one hour. In a small bowl, combine the egg yolks and water with a fork. Remove the plastic wrap from the loaves and brush them with egg wash. Bake at 325 degrees F for 15 minutes. Raise oven temperature to 425 degrees F and bake for 5 minutes. Remove from oven and cool on a wire rack. *Yields 2 loaves*

Addilyne Switzer • Beaman
Grundy County Rural Electric Cooperative

KILLARNEY IRISH BROWN BREAD

- 3¼ cups wheat flour
- ¾ cup white flour
- 2 teaspoons baking soda
- 2 teaspoons salt
- 2½ cups buttermilk
- 1 tablespoon golden syrup (or honey)
- 4 teaspoons butter, melted

Mix the flours, soda and salt into a bowl. Make a well in the center and add the buttermilk, golden syrup and butter. Use a large spoon to mix gently, just until dry ingredients are incorporated. Shape into a round on a baking sheet that has been lined with waxed paper. Cut a cross in the top with a sharp knife. Bake at 400 degrees F for 40 minutes, until the top is slightly cracked and crusty. To check if done, tip the loaf and tap the base – it should sound hollow. Cool on a wire rack. *Serves 12*

Chris Daniels • Casey
Guthrie County Rural Electric Cooperative Association

Visit www.ieclmagazine.com and search our online archive of hundreds of recipes in various categories.



CRANBERRY BRAN BREAD

- 1½ cups bran flakes
- 2 cups flour*
- 1½ teaspoons baking powder
- ½ teaspoon soda
- ½ teaspoon salt
- 1 cup sugar
- ½ cup nuts, chopped
- 1 egg
- 2 tablespoons vegetable oil
- 1 cup plus 2 teaspoons orange juice, divided
- 1 cup cranberries, halved
- 2 cups powdered sugar

Mix bran flakes, flour, baking powder, soda, salt, sugar, nuts, egg, vegetable oil, 1 cup orange juice and cranberries. You can substitute cranberries for ½ cup cranberries and ½ cup pomegranates. Bake in a greased loaf pan at 250 degrees F for 1 hour or until done. Mix 2 teaspoons orange juice with powdered sugar and drizzle over baked loaf.

**An alternative to 2 cups white flour would be ¼ cup brown rice flour, ½ cup milled flax seed, ½ cup almond flour, ¼ cup soy flour and ½ cup Nestrum Honey and Wheat cereal.*

Betty Sorden • Webster
T.I.P. Rural Electric Cooperative

WANTED:

SPRING-INSPIRED RECIPES

THE REWARD:
\$25 FOR EVERY
ONE WE PUBLISH!

Deadline is Jan. 31

Submit recipes that use fresh, seasonal ingredients such as asparagus, spring greens, rhubarb and more! Please include your name, address, telephone number, co-op name, recipe category and number of servings on all submissions.



EMAIL: recipes@ieclmagazine.com
(Attach your recipe as a Word document or PDF to your email message.)

MAIL: Recipes
Iowa Electric Cooperative Living magazine
8525 Douglas Ave., Suite 48
Des Moines, IA 50322

IOWA'S ELECTRIC COOPERATIVES: ENSURING AFFORDABLE AND RELIABLE POWER

Editor's Note: This article in Part 2 of a two-part series showcasing the impact of Iowa's electric cooperatives throughout all the state's 99 counties.

Iowa's electric cooperatives have a rich history of local ownership and member-driven governance, playing a pivotal role in bringing electricity to rural communities.

In the 1920s, while urban areas had widespread access to electricity, approximately 90% of rural residents lived without it. This lack of electrification made farm life arduous, with no indoor plumbing, reliable refrigeration, or safe lighting and heating. Investor-owned utilities at the time deemed it unprofitable to extend power lines to sparsely populated rural areas.

Recognizing this disparity, President Franklin D. Roosevelt established the Rural Electrification Administration (REA) in 1935 through Executive Order 7037 as part of his New Deal initiatives. The following year, Congress passed the Rural Electrification Act of 1936, providing federal loans to support the installation of electrical distribution systems in rural regions.

These efforts enabled rural communities to form not-for-profit electric cooperatives, facilitating access to affordable and reliable electricity. By 1950, 80% of American farms had electricity, and by 1960, this figure rose to 99%.

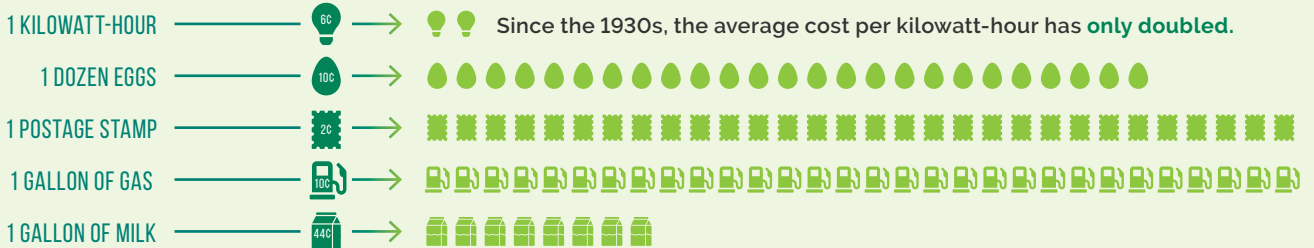
Doing more with less

Serving predominantly rural areas, Iowa's electric cooperatives manage extensive infrastructure with fewer customers per mile compared to investor-owned utilities. To address this challenge, co-ops structure rates to recover costs and collaborate with organizations like the Hawkeye Insurance Association and the Iowa Association of Electric Cooperatives to achieve economies of scale in supplies, insurance and technology solutions. This collaborative approach helps maintain affordability for members.

COST COMPARISON:

1930s

TODAY



In Iowa, the average household served by electric cooperatives spends about

\$5.25 PER DAY FOR ELECTRICITY

THAT'S CHEAPER THAN BUYING A SANDWICH OR SPECIALTY COFFEE DRINK!

The average household served by Iowa's electric cooperatives spends about \$5.25 per day on electricity, highlighting the cost-effectiveness of their services. Co-ops also offer energy efficiency programs, audits, rebates, and incentives to help members use energy wisely and reduce expenses. As member-owned entities, co-ops prioritize cost-based rates over profits, ensuring that financial decisions align with members' best interests.

Commitment to reliability

Ensuring reliable electricity is a top priority for Iowa's electric cooperatives. They conduct regular maintenance, infrastructure inspections and adhere to proactive vegetation management plans to minimize outages.

During the past 10 years, Iowa's electric cooperatives have kept the lights on 99.96% of the time despite

blizzards, ice storms, derechos, tornadoes or other extreme weather events. The average member served by an Iowa electric co-op experiences one outage per year, lasting approximately 138 minutes.

If a co-op does experience extensive outages, they work with neighboring co-ops for mutual aid to restore power to members as quickly and safely as possible.

During the past 10 years, Iowa's electric cooperatives have kept the lights on

99.96% OF THE TIME

DESPITE BLIZZARDS, ICE STORMS, TORNADOES, DERECHOS OR OTHER EXTREME WEATHER EVENTS.



Advocating for a balanced energy approach

A recent threat to reliability comes from misguided federal energy policy, which prioritizes intermittent sources of power like solar and wind over dispatchable sources like coal and natural gas.

Iowa's electric cooperatives believe in a diverse power generation strategy to ensure reliability. Our "all-of-the-above" generation portfolios include dispatchable sources of power because we can control the output and ramp up generation when needed to match sudden increases in electric demand.

Learn more about this issue at www.IARuralpower.org.

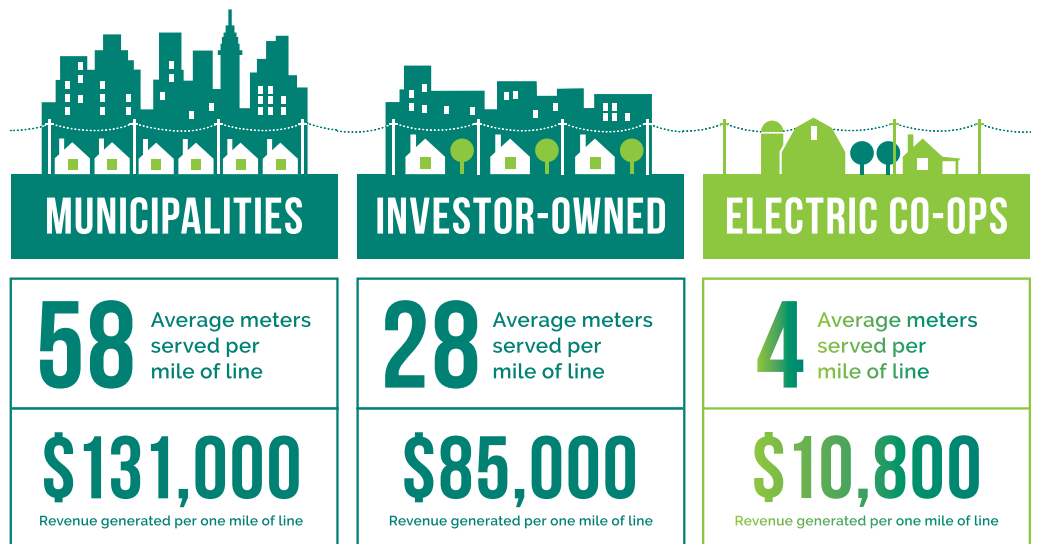
The average Iowa electric co-op member-owner experiences

1 OUTAGE

lasting an average of **138 MINUTES** PER YEAR

A legacy of service

From their inception, Iowa's electric cooperatives have been instrumental in transforming rural life by providing essential electric services. Their commitment to member-owners, focus on affordability, reliability and community collaboration continue to drive their mission, ensuring that the needs of rural Iowans are met with dedication and innovation.



ANNOUNCEMENT

Watch for the 2025 Guthrie County REC board election results and annual meeting highlights in your February issue of *Iowa Electric Cooperative Living*.

NONDISCRIMINATION STATEMENT

In accordance with Federal civil rights law and U.S. Department of Agriculture (USDA) civil rights regulations and policies, the USDA, its agencies, offices, and employees, and institutions participating in or administering USDA programs are prohibited from discriminating based on race, color, national origin, religion, sex, gender identity (including gender expression), sexual orientation, disability, age, marital status, family/parental status, income derived from a public assistance program, political beliefs, or reprisal or retaliation for prior civil rights activity, in any program or activity conducted or funded by USDA (not all bases apply to all programs).

Remedies and complaint filing deadlines vary by program or incident.

Persons with disabilities who require alternative means of communication for program information (e.g., Braille, large print, audiotope, American Sign Language, etc.) should contact the responsible Agency or USDA's TARGET Center at 202-720-2600 (voice and TTY) or contact USDA through the Federal Relay Service at 800-877-8339. Additionally, program information may be made available in languages other than English.

To file a program discrimination complaint, complete the USDA Program Discrimination Complaint Form, AD-3027, found online at www.usda.gov/sites/default/files/documents/ad-2037.pdf and at any USDA office or write a letter addressed to USDA and provide in the letter all of the information requested in the form. To request a copy of the complaint form, call 866-632-9992. Submit your completed form or letter to USDA by:

- (1) Mail: U.S. Department of Agriculture
Office of the Assistant Secretary
for Civil Rights 1400
Independence Avenue, SW
Washington, D.C. 20250-9410; or
- (2) Fax: (833) 256-1665 or
(202) 690-7442; or
- (3) Email: program.intake@usda.gov

USDA is an equal opportunity provider, employer and lender.

RESOLVE NOT TO FALL VICTIM TO SCAMS

With the new year comes a renewed effort to scam utility customers out of their hard-earned money. Every day, scammers' tactics become more sophisticated, making it difficult to trust anything you hear.

While there isn't a definitive number on exactly how many people fall victim to these scams each year, the Federal Trade Commission (FTC) considers them the most common type of fraud reported to that agency. A 2021 Better Business Bureau scam tracker report suggested that victims lose, on average, \$500 in a utility scam.

Tips to avoid being scammed

NEVER make a utility bill payment to anyone who contacts you, whether by phone, email, text or in-person at your door. Even if they look like they could be with Guthrie County REC, it's completely within your rights to call the cooperative office to verify.

Take a deep breath. A true con artist doesn't want to give you time to think, and they will pressure you to provide the information by using scare tactics, such as threatening to cut your power. Guthrie County REC will never disconnect your service without notice. We will work with you or find community resources to help you pay

your bill, if needed. It should never be a surprise to you if you are behind on payments.

If you do fall for a utility scam, take these steps:

- Report the scam to your local police department, the FBI (www.ic3.gov), the FTC (www.reportfraud.ftc.gov) and the Iowa Attorney General (www.iowaattorneygeneral.gov).
- Report the scam to Guthrie County REC by calling 888-747-2206.
- Contact your bank or credit card to see if you can get the charge reversed.
- Temporarily freeze your credit. It's free and easy to do online at the Transunion, Equifax and Experian websites.
- Consider identity theft protection. Service providers can track the use of your card and monitor for any other signs of identity theft.

Start the new year off right by making it difficult for scammers to steal your information. Remember, if it doesn't feel right, it probably isn't! Call the cooperative to verify your account information or for other questions about your account.

TO ALL OUR MEMBERS



From all of us at Guthrie Co. REC, thank you for trusting us to power your community!



Guthrie County REC

A Touchstone Energy Cooperative

guthrie-rec.coop

6 WAYS TO UNCOVER SAVINGS WITH A DO-IT-YOURSELF ENERGY AUDIT

BY MIRANDA BOUTELLE

A home energy audit may sound daunting, but it can be as easy as creating a checklist of improvements based on what you see around your home.

Here's what you'll need to find opportunities to save energy and money: a flashlight, dust mask, tape measure and cooking thermometer. As you progress through these six steps of an audit, take notes on your phone or a notepad.

1 Check the heating and cooling equipment.

Determine the age and efficiency of the equipment by looking up the model number on the nameplate. The average lifespan of HVAC equipment is 10 to 30 years, depending on the type of equipment and how well it's maintained. If your equipment is older, it may be time to budget for an upgrade. Check the filter and replace it if needed.

2 Check the envelope of your home, which separates the heated or cooled areas from the exterior, for drafts and air leakage.

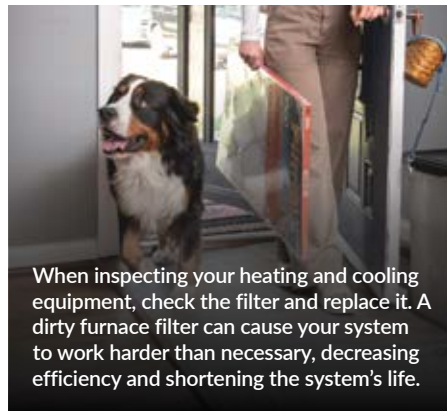
Feel around windows and trim for any drafts. Pay special attention to spots where different building materials come together. Check under sinks for gaps around pipes. Seal with weatherstripping, caulk or expanding foam as needed.

3 Replace incandescent or compact fluorescent bulbs with LEDs.

LEDs use significantly less energy and last longer than traditional incandescent bulbs.

4 Inspect faucets for leaks and make sure aerators and showerheads are high-efficiency models in good condition.

The gallons-per-minute (GPM) ratings should be etched onto them. To reduce wasted energy from using more hot water than



When inspecting your heating and cooling equipment, check the filter and replace it. A dirty furnace filter can cause your system to work harder than necessary, decreasing efficiency and shortening the system's life.



LEDs come in a range of color temperatures. For a warm glow similar to incandescent bulbs, buy bulbs with a color temperature around 2700 Kelvin.

needed, aerators should be 0.5 to 1.5 GPM, and showerheads should be no more than 2 GPM.

5 Look in the attic, while wearing a dust mask, to make sure it's insulated.

You may be able to see enough from the access area using a cellphone with the flash on to take pictures. Use the tape measure to check the depth of the insulation. In Iowa, you should have insulation rated at R49-R60 in your attic.

Insulation can become compacted over time. It should be evenly distributed throughout the attic. Loose fill or blown-in insulation should be fluffy and evenly dispersed. Rolled batt insulation should fit tightly together without gaps.

Also, exterior walls should be insulated. If your home is older than the 1960s, the walls are probably not insulated. Homes from the 1960s or 1970s likely need more insulation. Sometimes you can see wall insulation by removing an outlet cover or switch plate and using a flashlight to look for insulation inside the wall cavity. Turn off the power at the electrical panel to avoid the risk of electric shock. Wall insulation can be blown in from the inside or the outside of the home. This is a job for a professional.

Unfinished basements should have insulation on the rim joists, at minimum. This is the area between the top of the foundation and the underside of the home's first-story floor. Use closed-cell spray foam or a combination of rigid foam and spray foam to insulate rim joists. Crawl spaces should have insulation on the underside of the floor between the floor joists. Insulation should be properly supported in contact with the floor with no air gaps. Water pipes and ductwork should also be insulated.

6 Check the temperature of your water by running it for three minutes at the faucet closest to your water heater.

Then fill a cup and measure with a cooking thermometer. Hot water should be between 120 and 140 degrees F. You can reduce the temperature on your water heater to reduce energy waste and prevent scalding.

Once your home energy audit is finished, review your findings and start prioritizing home energy efficiency projects. For step-by-step instructions, visit www.energy.gov/save.

Miranda Boutelle writes on energy efficiency topics for the National Rural Electric Cooperative Association.

UTILITY-SCALE VS. RESIDENTIAL BATTERY STORAGE

BY JENNAH DENNEY

In an ever-changing energy landscape, electric cooperatives are on the cutting edge of delivering reliable, resilient power to the local communities they serve. Co-ops utilize a variety of generation and grid technologies to provide power, including battery energy storage – but not all battery storage systems are the same, and understanding the key differences between each is important. It's also important to recognize that the technology and cost-effectiveness of battery storage options are still being developed.

Utility-scale battery systems are designed for large-scale energy storage to support the electric grid, requiring high initial investments but offering significant long-term savings and benefits. In contrast, residential battery systems cater to individual homes, providing more energy independence and savings while still representing a significant investment.

Utility-scale battery storage

Utility-scale storage systems are large installations designed to store vast amounts of electricity. Typically connected to the grid, these systems can store power generated from both baseload and renewable energy sources, with capacities ranging from several megawatt-hours (MWh) to gigawatt-hours (GWh).

While most battery storage system projects are developed with a primary application in mind, they can also be optimized for multiple applications, which adds significant additional value.

Utility-scale storage systems could play a crucial role in grid stabilization by absorbing excess energy during periods of low electricity demand and releasing it during peak demand, which is particularly



Often paired with residential solar panels, residential battery storage systems allow homeowners to store excess energy generated during the day for use later at night or during power outages. *Photo Source: LG*



Utility-scale battery systems are designed for large-scale energy storage to support the electric grid, requiring high initial investments but offering significant long-term savings and benefits. *Photo Source: Trico*

beneficial in rural areas where demand can fluctuate significantly.

Electric cooperatives can also deploy utility-scale storage systems at electric substations to enhance grid resilience and ensure a steady supply of electricity as needed. In the event of a power outage, utility-scale storage systems can provide backup power to critical infrastructure, such as hospitals and emergency services.

Residential battery storage

Residential battery storage systems are compact installations designed for individual homes, typically ranging from a few kilowatt-hours (kWh) to tens of kWh in capacity. Often paired with residential solar panels, these smaller systems allow homeowners to store excess energy generated during the day for use later at night or during power outages, providing a level of energy independence.

By utilizing stored energy, homeowners can reduce their energy bills and ensure a steady supply of power, even during grid disruptions and outages, enhancing the resilience of rural households. However, the initial cost of purchasing and

installing a residential storage system can be expensive, which may deter some homeowners.

Electric co-ops are increasingly recognizing the benefits of residential battery storage. These systems not only support grid stability and resilience but also help reduce costs for co-ops and their members. Some co-ops offer energy storage programs and rates, which means homeowners can contribute to a more efficient and reliable energy system. This benefits the entire community.

As electric co-ops navigate the complexities of modern energy supply and battery storage continues to evolve, the strategic deployment of both utility-scale and residential battery energy storage systems can potentially play a transformative role.

By understanding the unique advantages and challenges of each type of system, co-ops and their members can make informed decisions that enhance grid reliability, reduce costs and improve resilience for their communities.

Jennah Denney writes on consumer and cooperative affairs for the National Rural Electric Cooperative Association.

FINDING BEAUTY IN THE BROKEN

BY DARCY DOUGHERTY MAULSBY

Time is a funny thing, isn't it? We spend time. We kill time. We lose track of time. We invest time. And yet time keeps passing – something we're keenly aware of at the start of each new year.

Now's the time when many people resolve to start fresh, leaving the past behind. Just think of all the New Year's resolutions that abound. I'm going to eat healthier! I'm going to exercise more! I'm going to spend less time on social media! I'm going to save more money! (Do any of these sound familiar?)

Yet how many of these big goals become big accomplishments? It depends on who you ask. According to the Baylor College of Medicine, 88% of people who set New Year's resolutions fail them within the first two weeks. (Been there, done that.) Psychology articles in magazines like *TIME* and *Forbes* state that only 8% of people stick with their resolutions the entire year.

Maybe we need a different perspective to make the most of the year ahead. Perhaps we all could use fewer resolutions and a little more kintsugi. What's that, you ask? This remarkable Japanese art form finds beauty in the broken. While it dates back hundreds of years, it's a compelling metaphor for modern life.

Kintsugi is built on the idea that in embracing flaws and imperfections, you can create an even stronger, more exquisite piece of art. In kintsugi, the artist fixes broken pottery with gold. Instead of repairing the item like new, this technique highlights the "scars" as a part of the design.

From broken bowls to books

This concept captured my attention during a "Come to the Quiet" retreat at the Woodlawn Christian Church in Lake City in March 2024. Lorene Knobbe, a Lake City native who lives in Davenport, displayed

a gorgeous kintsugi bowl to help us visualize one of the lessons.

Lorene, a retired elementary school teacher, now provides spiritual direction through her ties to the Benet House Retreat Center at St. Mary Monastery in Rock Island, Illinois. She serves as a facilitator for church retreats and similar events.

As she held her kintsugi bowl on that cold winter afternoon in Lake City, she encouraged everyone to think of your life as a book with chapters and stories. Some of your chapters are filled with fun, exciting stories. Other chapters are dark and painful. None of the chapters can ever be erased, though. All of them will always be part of you – just like the cracks in the kintsugi bowl.

That isn't necessarily comforting, especially if you're struggling to reach New Year's resolutions, or you're overwhelmed by a trauma-shattered life.

The good news? You don't need to try to hide the cracks as you put the pieces back together. Instead, highlight those repaired seams, which add strength, beauty and immeasurable value.

Reframing life's experiences

Kintsugi isn't just for broken pottery or shattered ceramics. Kintsugi can be found in people whose bodies are injured or failing. While these folks can't do what they once did, their spirit can become more beautiful, helping the rest of us see the divine more clearly.

Kintsugi is also reflected in people who have learned to "rewire" their brain to focus on the positive instead of the negative. These amazing souls routinely express gratitude, knowing that there's always something to be thankful for.

The chapters of these authentic life stories are filled with resilience and hope. They can also inspire the most practical resolution for the year ahead – embrace the principles of kintsugi. What a powerful way to reframe life's experiences and write new chapters in our story, all by finding beauty in the broken.

Darcy Dougherty Maulsby lives near her family's Century Farm northwest of Lake City. Visit her at www.darcymaulsby.com.



A kintsugi bowl that was shared during the "Come to the Quiet" retreat in Lake City.



IOWA ELECTRIC COOPERATIVE LIVING

The magazine
for members of
Iowa's electric
cooperatives

January 2025

Visit our website at www.guthrie-rec.coop



POWERING LIFE'S BEST MOMENTS

It's good to know your Touchstone Energy® cooperative is always there so you can keep doing all the things that are important to you. Our commitment is to give you the energy you need to enjoy life's moments.

YOUR SOURCE FOR POWER. AND INFORMATION.

Visit us at: WWW.TOUCHSTONEENERGY.COM

